

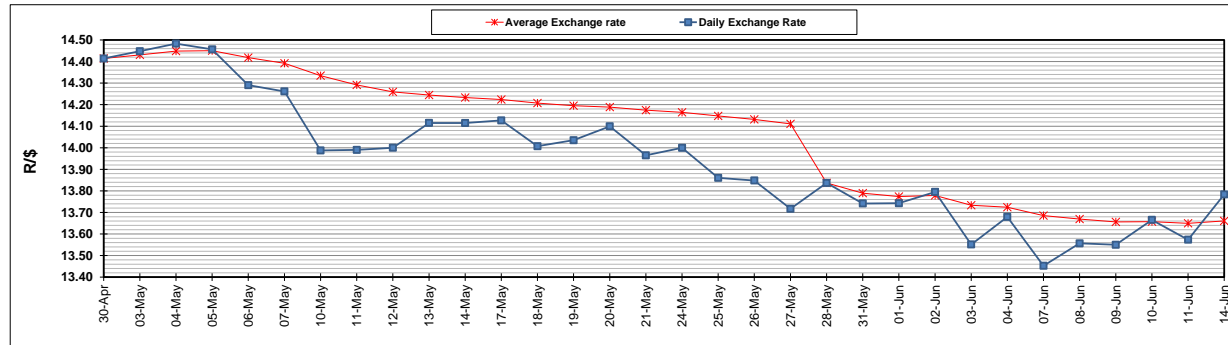
	PETROL 95 ULP	PETROL 93 ULP & LRP	DIESEL 0.05%	DIESEL 0.005%	ILL. PAR.
GAUTENG PUMP PRICE (SA c/l) AS FROM 02/06/2021	1,713.000	1,691.000	-	-	-
WHOLESALE PRICE (SA c/l) AS FROM 02/06/2021	-	-	1,466.620	1,471.020	877.488
SINGLE NATIONAL MAXIMUM RETAIL PRICE	-	-	-	-	1,102.000
BASIC FUEL PRICE - 14/06/2021 (SA c/l)	738.490	730.598	716.517	719.782	696.557
PRESS RELEASE CONTRIBUTION TO BFP 02/06/2021 - 14/06/2021 (SA c/l)	717.170	705.170	679.630	684.030	664.128
UNIT OVER/(UNDER) RECOVERY - 14/06/2021 (SA c/l)	(21.320)	(25.428)	(36.887)	(35.752)	(32.429)
AVERAGE BASIC FUEL PRICE 28/05/2021 - 14/06/2021	713.210	704.921	693.856	697.449	672.878
AVERAGE UNIT OVER/(UNDER) RECOVERY 28/05/2021 - 14/06/2021	6.460	2.749	(19.226)	(18.669)	(13.750)

ANALYSIS MOVEMENT OF AVERAGE OVER/(UNDER) RECOVERY

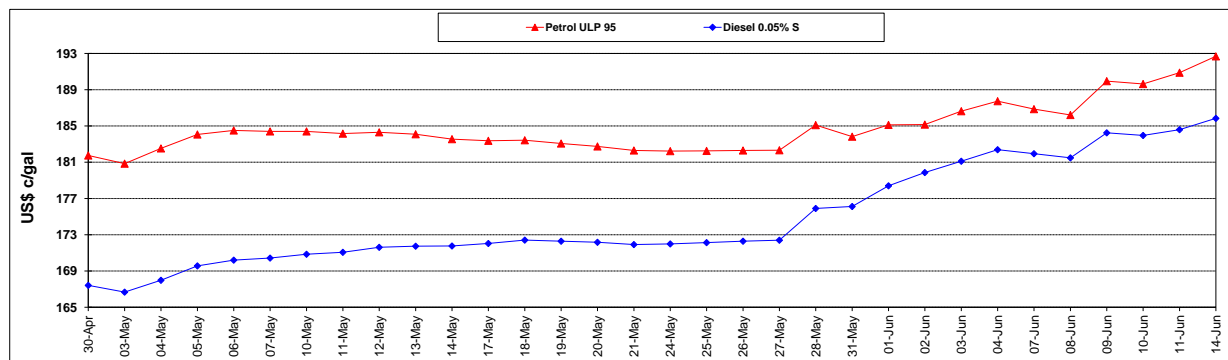
	PETROL 95	PETROL 93	DIESEL 0.05%	DIESEL 0.005%	ILL. PAR.
- MOVEMENT IN INTERNATIONAL PRODUCT PRICES	(17.050)	(20.487)	(42.098)	(41.659)	(35.930)
- MOVEMENT IN EXCHANGE RATE	23.510	23.236	22.872	22.990	22.180
AVERAGE UNIT OVER/(UNDER) RECOVERY 28/05/2021 - 14/06/2021	6.460	2.749	(19.226)	(18.669)	(13.750)

R/\$ EXCHANGE RATE - (R/\$13.7835- 14/06/2021)

EXCHANGE RATE USED IN BASIC FUEL PRICE



INTERNATIONAL PRODUCT PRICES OF BASKET USED IN BASIC FUEL PRICE



BASIC FUEL PRICE IN SA CENTS PER LITRE

